

The new automatic
**EXACT LASER CUTTING AND
ENGRAVING SYSTEM**
for flexo plates



Versions

EXACT 42x60

EXACT 50x80

Product page



Engraving Capabilities

Extreme Precision

Speed and Efficiency

Repeatability

Safety

EXACT Laser Cutting System

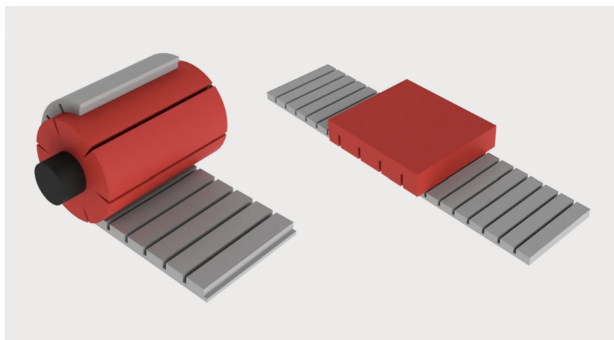


The EXACT Flexo Plate Laser Cutting & Engraving system by AV Flexologic is the pinnacle of innovation in the flexographic printing industry. Designed to replace traditional knife-based cutting systems, the EXACT brings unmatched precision, speed, and efficiency, ensuring your business stays ahead in a competitive market.

- Laser Cutting flexo plates: Achieve unparalleled precision and consistency in cutting flexo plates.
- Optional Engraving: engrave QR codes, text, etc on the back or front of plates for plate identification
- High Speed & Accuracy
- Clean cuts / edges

Linear motors

The EXACT can be upgraded with a linear motor system, offering **smoother control** for **high-precision applications** compared to standard belt drives.



Advantages

EXACT Laser Cutting System delivers consistent **high quality results** by employing lasers, ensuring **precise edges** without the presence of burrs or residual cuttings from knives or plates in the printing process.

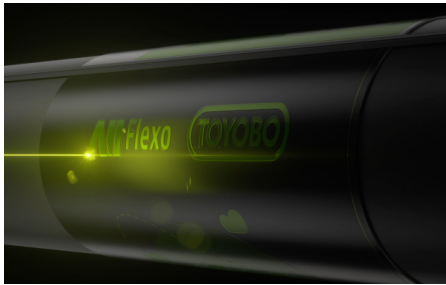
Laser technology enables **faster cutting speeds** than knife-based devices, overcoming blade breakage limitations and eliminating the need for vertical movements to change direction.

BOFA AD 1500 iQ

This fume extraction system makes sure that the fumes created by the melting of the flexo plates are filtered and perfectly safe to breath when extracted air is released into the workshop.

- Real-time airflow reading
- Independent filter condition monitoring
- High contrast display
- Remote diagnostics via USB
- Long-life, low-cost replacement filters





Engraving Capabilities

The EXACT is able to laser-engage on the front or the back of the plate.

Usable in AV Flexologic plate mounters for plate ID verification.

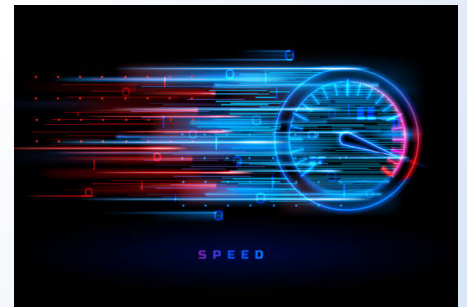
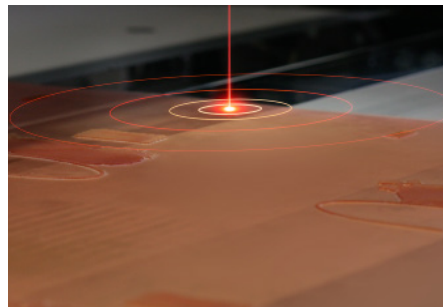
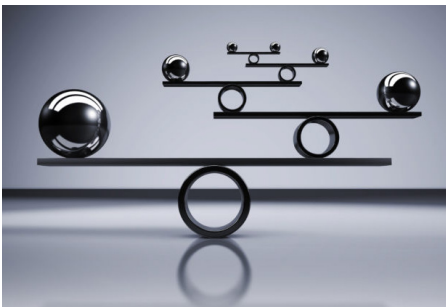
Enables traceability of plates and plate usage.

Full Enclosure for Added Safety

Lasers eliminate the risk of injury from sharp blades and reduce the risk of damage to the plates. The EXACT is also fully enclosed.

Image Recognition

Detects and measures the positions of mounting marks to 'teach' the machine exactly how the plate is positioned, but also compensates for any distortion of the plate dimensions following the plate production process.



Consistency and Quality

Lasers provide consistent results, making it easier to produce high-quality plates consistently.

The Exact ensures unvarying results guaranteeing clean edges due to use of laser—no burring by knife or plate cut residues in the (printing) process.

Precision

Lasers provide precise cuts with a high level of accuracy, ensuring consistent cutting quality. The EXACT will cut flexo plates exactly to size and eliminate the need for post-trimming.

No bending or shifting of a cutting blade.

Speed & Efficiency

Fast Operation: Lasers operate at higher speeds without the mechanical limitations of knives, ensuring faster production cycles.

Automation: Integrates seamlessly with workflow automation systems like ESKO, Hybrid, and Kodak.



Sustainability

Router systems like Kongsberg require bridge strips between cuts, wasting up to 10% of plate material. The Exact has the possibility to eliminate this



Versatility

Engraving Capabilities: Can engrave on both sides of the plate for enhanced traceability and plate ID verification.

Multiple Versions: Available in sizes to meet diverse operational needs.

Engraving option

The **engraving option** on the EXACT offers a versatile and advanced method for **adding detailed markings to flexo plates**. This feature enhances the machine's functionality, enabling it to not only cut but also **engrave precise, high-quality graphics** directly onto the plates. This capability is particularly beneficial for **creating unique identifiers, intricate patterns, or specific textual information** on the plates, which can aid in **tracking, quality control, and alignment** during the printing process.

Key aspects of the engraving option include:

- **Precision and Detail:** the laser engraving technology allows for fine and detailed work, producing crisp and clear engravings.
- **Versatility in Design:** it can handle a wide range of engraving designs, from simple text and logos to more complex and intricate graphics.
- **Enhanced Plate Functionality:** engravings can serve various purposes, such as alignment markers or identification tags, adding functional value to the plates.
- **Durability of Engravings:** The laser engraving is permanent and resistant to wear, ensuring that the engravings remain legible over the plate's lifespan.
- **Efficient Process:** The engraving option integrates seamlessly into the plate processing workflow, maintaining efficiency without additional operator handling or significant additional processing time.



Energy & sustainability

Router systems like Kongsberg require bridge strips between cuts, wasting up to 10% of plate material. The Exact has the possibility to eliminate this completely.

Operator independent

Free from reliance on operator intervention. Explore unparalleled automation and reliability for seamless production, setting new standards in the industry.

Workflow automation

Streamline your workflow with this system compatible with ESKO, Hybrid, and Kodak systems.

Quality assurance with image recognition

Leveraging advanced image recognition for quality assurance, ensuring consistently accurate results without compromise.

Higher Cutting Speed

Reduce production time and increase throughput.

Minimal Downtime

Less maintenance and no blade changes mean more operational hours.

Reduced Waste

Precise cuts mean fewer rejected plates and lower material costs.

Key specifications

120 W CO2 continuous RF tube (max 150W)

| | |
|----------------------|------------|
| Cutting speed | 75 mm/s |
| Engraving resolution | 254 DPI |
| Power requirement | 16 A 380 V |

250 W CO2 Pulse RF tube (Pulse 600 W)

| | |
|----------------------|------------|
| Cutting speed | 150 mm/s |
| Engraving resolution | 254 DPI |
| Power requirement | 32 A 380 V |

Available sizes

The EXACT Laser Cutting System is available in two size:

| | |
|-------------|---------------------|
| 42x60 Model | 101.6 cm x 154.4 cm |
| 50x80 Model | 127 cm x 203.2 cm |



Do you need urgent support? Call us at any time!

Our team consists of more than 20 experienced engineers who can help you with any problem you might face. We provide support in: English, German, Spanish, French, Italian, Dutch, Romanian, Arabic, and Thai.

AV Flexologic Care

Explore AV Flexologic Care Packages that provides you support even after the warranty expires.

| | Level 1 | Level 2 | Level 3 |
|----------------------------------|---------|---------|---------|
| Access to knowledge base | ● | ● | ● |
| Training videos | ● | ● | ● |
| Free remote support | ● | ● | ● |
| Spare parts 15 % discount | ● | ● | ● |
| 24/5 assistance | | ● | |
| 24/7 assistance | | | ● |
| Software upgrades | | ● | ● |
| Yearly maintenance visit | | ● | ● |
| Extended warranty parts & labour | | | ● |
| Dashboard* | | | ● |
| 24/7 support | | | ● |

Request your own AVF Care package at av@flexologic.nl or call us at +31 (0) 172 503 621

*Dashboard only on FAMB 3.0 & SAMB

You can contact us easily in many ways:



Call us at **+31 (0) 172 503 621** or **+1-800-467-1746** for USA.



We create an account for you in our support portal 'Freshdesk'. You can always create a ticket when you log into your account.



Send an email to **support@flexologic.nl**.

By sending your email, a ticket is automatically created in our system, and we will provide support as soon as possible.



Visit our website at **www.flexologic.nl/support** and fill in the contact form.

By sending the form, a ticket is automatically created in our system and we will support you in a short time.

What happens next?

Once we receive your ticket or email, we will support you in the following ways:



Ticket received!
Our service team will contact you soon



A.



Remote support via telephone

No Solution?

B.



Remote assistance via TeamViewer



C.



We will send an engineer to repair your machine



Do you want to easily find information about your machine?

Our support portal is designed to provide you help in an instant. By logging in to Freshdesk, you will be able to find information about your machine and answers to frequently asked questions.

For additional information about Support & Service, visit our website: www.flexologic.nl/support

COMPLETE FLEXO SOLUTIONS FOR EVERY FLEXOGRAPHIC PRINTER

www.flexologic.nl

sales@flexologic.nl

H. Kamerlingh Onnesweg 2,
2408 AW Alphen aan den Rijn
the Netherlands

+31 172 434 221

